

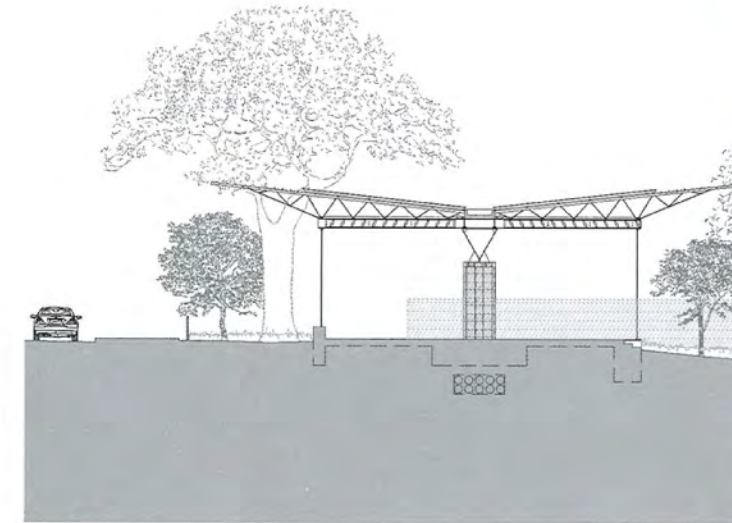


PROJECT FACTS

Address: The University of Texas at Austin, Austin, TX, USA. Client: The Texas Exes. Completion: 2004. Production: single piece. Design: individual design. Functions: multi-function outdoor pavilion. Main materials: steel, glass and brick.



↑ | Side elevation



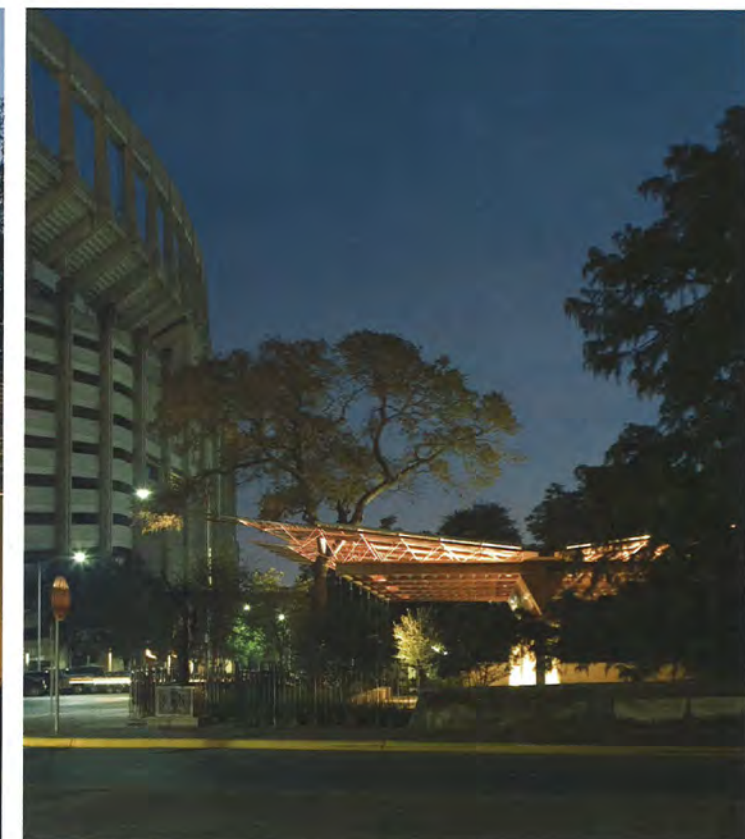
↑ | Section

↓ | Side elevation at night, with the shades down



↑ | Close up view of the steel structure

↓ | Pavilion at night, with the University of Texas football stadium in the background



Texas Cowboys Pavilion

Austin

This addition to the alumni center grounds extends the uses of the facility by creating an outdoor pavilion amidst the trees. Flanking the football stadium, it offers a location for pre-game events and post-game parties, lectures and presentations. The speakers, A/V connections and moveable spotlights provide flexibility for various events, which thanks to integral fans, indirect lighting and roll-down sunshades, can occur all year round and at any time of day. The expressive structure of the pavilion takes its roots from the existing alumni center trellises. The beams, trusses and glass roof form a system balanced upon two brick columns and stabilized by post-tensioned stainless steel cables.



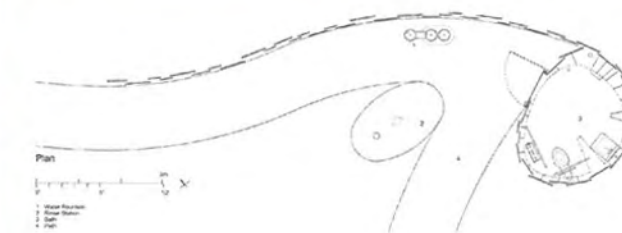
↑ | View looking down on restroom



↑ | Interior
↓ | Entrance area



Elevation



Plan

↑ | Elevation and restroom plan
↓ | Close up of Corten steel panels



Trail Restroom

Austin

The restroom was conceived as a sculpture in a park, a dynamic object along the active trails. It consists of vertical Corten steel plates whose width and height vary in size. The panels form a spine that coils at one end to form the restroom walls. The plates are staggered in plan to control views and to allow penetrating light and fresh air. Door and roof were fabricated from steel plates as well. The restroom is handicap-accessible and, in addition to a chest of drawers, urinal, sink and bench inside, it includes a drinking fountain and shower outside. The plumbing fixtures are made of heavy duty stainless steel and there is no need for artificial light or mechanical ventilation inside.