

CITY
Austin (TX)

COUNTRY
USA

REGION
North America

TYPOLGY
Public

COMPLETION
2007

WEBSITE
www.mirrorlivera.com

ARCHITECTS
Miro Rivera Architects

LADYBIRD LAKE HIKE AND BIKE TRAIL RESTROOM

Conceived as a sculpture in a park, this is the first public restroom built for the park in over 30 years. It consists of forty-nine 3/4" thick vertical steel plates whose width and height vary significantly. Arranged along a spine and ranging in size, each plate is staggered in plan to control views and allow penetrating light and fresh air into the restroom. To compliment the striking geometry, industrial weathering steel known-as 'Cor-ten' is the finish for the plates. The oxidation of the panels creates a protective outer layer that eliminates the maintenance associated with painting and produces a natural appearance.

01 General view 02 Entrance to restroom 03 Staggered Cor-ten steel plates 04 Site section and site plan 05 Restroom interior

Photos: Paul Finkel



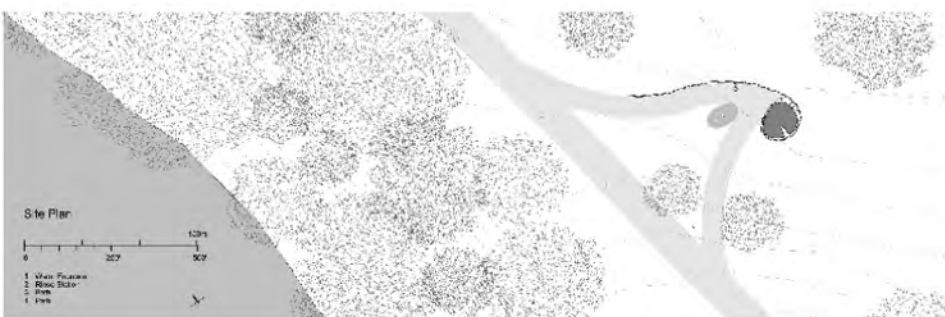
01



02



03



04

05



01

GUEST HOUSE

Located on a two-acre peninsula, the Guest House is surrounded by a natural landscape that includes reed-covered wetlands, serving as a migratory stop for egrets and swans. The project utilized an analysis of the existing vegetation and wild life to implement a ten-year plan that will eliminate invasive plants, reintroduce native plants, and restore the existing wetlands. The beauty of the surroundings informs many aspects of the project beginning with the access to the peninsula from the house. To limit ecological impact, the house was conceived with a minimal footprint as a light vertical structure consisting of three floors.

01 Terrace 02 Exterior view by night 03 Front entry 04 Exterior view from lake 05 Ground floor plan

Photos: Paul Finkel



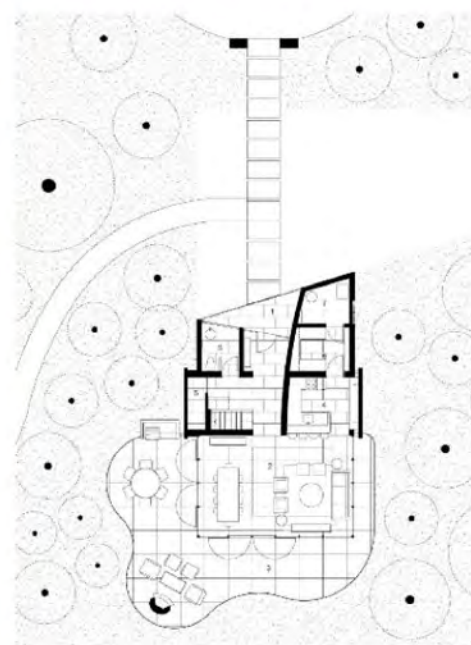
02



03



04



05